



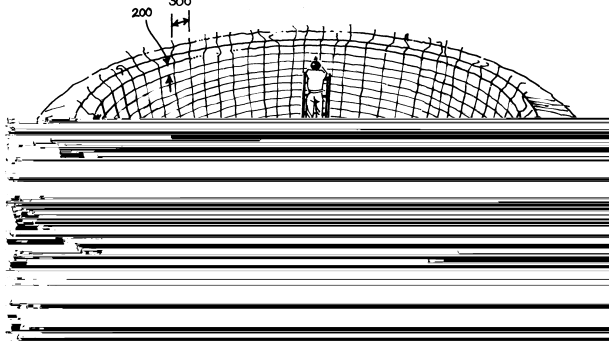


# Buried and semi-submerged water tanks

80 3

7

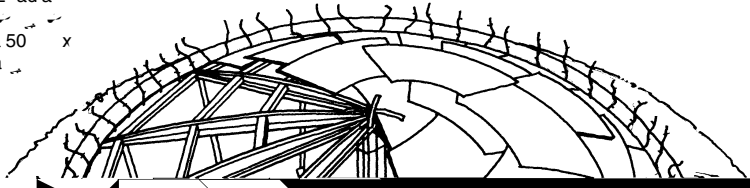
N-x da, a a a ba b-d a u 50 a .T ac  
 b- u db-200 . T add ada a ax u ac  
 300 a a .T ud -e, ab a b 300 ( )  
 ca a-b c a-d ).  
 N c d a a-a a c c ( 25  
 a u ) a a-a 200 b adac a .l u a,a , a  
 a adac xca a a d c uc ac a .



8

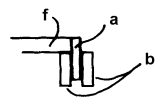
A 30 1:3 a c  
 d da, add a a d, .Cu  
 a a u ca  
 T a c d u db a  
 50 da a a d-  
 c e 1 ab a  
 a u d a .L a, b a  
 ac, a a add  
 b acc c a  
 c c .P a  
 c d, a c ad  
 ad c c  
 a  
 Fx c d a ac  
 ab u c e 25  
 a ca a

F u ( ) e a u 12 ada  
 b ( ), 150 x 25 a d cu a u  
 (a ca ad u 6.25 ), d a 50 x  
 100 b ( ) ac d a a  
 ca b ( ) d  
 S a d d ada b  
 a a e 10  
 da ba ( ) d u d d  
 Su d a a  
 ca ( ) 1.9  
 Na 50 x 50 b ( )  
 50 x 100 ada b  
 a d u  
 d ( ) u d  
 u ca b-cu  
 a d 210- d u ( u d 48),  
 bu u a d a cu  
 3.06 adu c  
 d a cu a

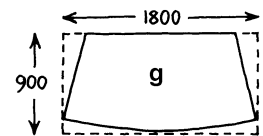


g a

Cu ab u 50 add a ( )  
 ( a a d-a ) a d u ca  
 d a u a d  
 a a cu d .W bu  
 d a, u ca  
 u a



Cross section of radial timbers



steel sheets

